

VARUN IMPEX
Solutions for Furniture Industry

BED FITTINGS

INDEX



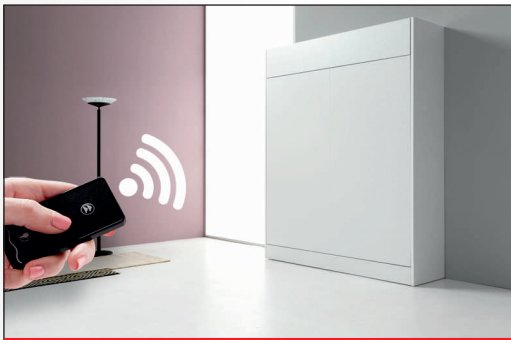
Aladino Hideaway Double
Bed Manual Version

05



Aladino Hideaway Sofa Cum
Bed Manual Version

06



Aladino Hideaway Bed Single Vertical
Manual Version

07



Aladino Hideaway Double Bed
Motorized Version

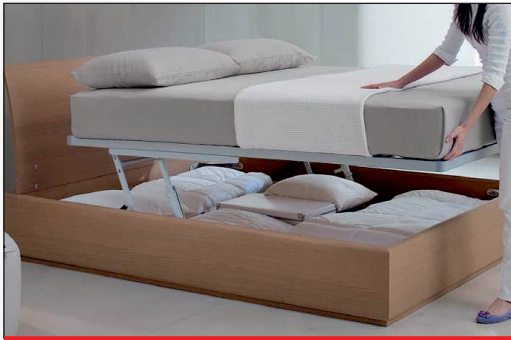
08



Aladino Hideaway Sofa Cum Bed
Motorized Version

09

INDEX



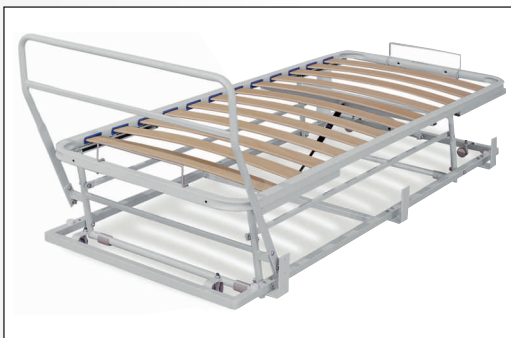
Pratik Storage Bed Fitting

10



Giove Storage Bed Fitting

11



Alby Bed Fitting

Alby - M

Alby - L

12-13



Hotel Bed Fitting

14

VARUN IMPEX

It is a constant research of technical and innovative solutions for highly customized bed systems. Every branch has specific needs to be satisfied. The technical department is trained to offer original and effective solutions for a functional and reliable products' manufacturing.

Customization of the product is a factor of primary importance for our customers, therefore **Varun Impex** is providing a service of laser cutting, by which it's possible to "brand" technical and aesthetic details of the bed systems.

Aladino is a functional and comfortable hideaway bed with a smooth balanced manual opening. Developed for a daily use, its strength is given by the use of important tube profiles, which prevent the doors from bending, granting a long lifetime over the years. For cabinets with inside closing front.

Available in three versions: • **Single size vertical** • **Single size horizontal** • **Double size** Some sizes can be completed by a collapsible sofa or table set.

Pratik horizontal lift-up and total opening system is the one and only patented system, allowing the horizontal lift-up of the bedspring in one single step. **Pratik** allows to make the bed every day in a comfortable way and to get easily access to the container which becomes a comfortable storage unit.

Pratik is available in three models: • **Pratik Standard** • **Pratik Eko** • **Pratik Deluxe** (motorized) and three versions: • **Double size** • **Single size vertical** • **Single size horizontal**.



Aladino Hideaway Double Bed Manual Version



Aladino is a functional and comfortable hide-away bed with a smooth balanced manual opening. Developed for a daily use, its strength is given by the use of important tube profiles, which prevent the doors from bending, granting a long lifetime over the years, For cabinets with inside closing front. It can be completed by a collapsible sofa set.

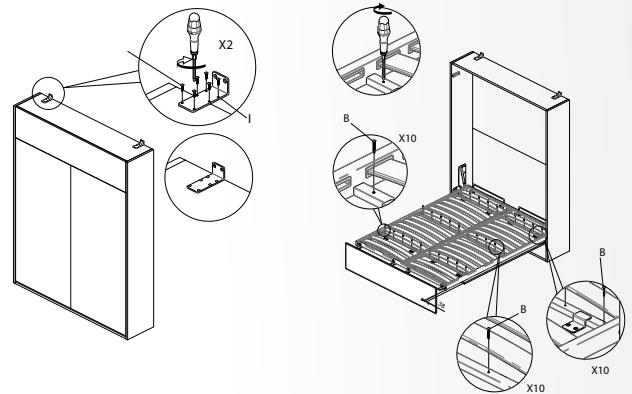
Available in size:

- Double (Vertical) Bed size 1620mm x 2000mm



MANUAL VERSION: TECHNICAL DETAILS

Bedspring	1620mm
Mattress size	1600 x 2000mm
Bedspring weight	38Kgs
Mattress average weight	28Kgs
Footboard panel weight	7Kgs
Front panel weight	32Kgs
Internal cabinet size	2175 x 1705 x 380mm



NOTE: Please ensure the weight balance (Front panel + Footboard panel) does not exceed 47.5kgs, If the weight exceeds the mattress weight has to be reduced in its accordance.

Aladino Hideaway Sofa Cum Bed Manual Version



Aladino is a functional and comfortable hide-away bed with a smooth balanced manual opening. Developed for a daily use, its strength is given by the use of important tube profiles, which prevent the doors from bending, granting a long lifetime over the years, For cabinets with inside closing front. It can be completed by a collapsible sofa set.

Available in size:

- Double (Vertical) Bed size 1620mm x 2000mm



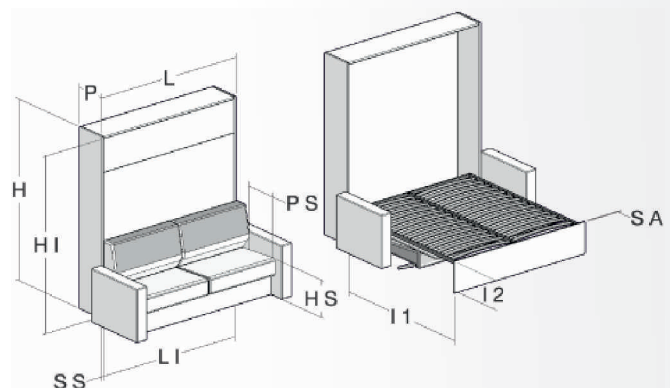
Gas springs



Polymer cover

MANUAL VERSION: TECHNICAL DETAILS

Bedspring	1620mm
Mattress size	1600 x 2000mm
Bedspring weight	38Kgs
Mattress average weight	28Kgs
Footboard panel weight	7Kgs
Front panel weight	32Kgs
Internal cabinet size	2175 x 1705 x 380mm



NOTE: Please ensure the weight balance (Front panel + Footboard panel) does not exceed 47.5kgs, If the weight exceeds the mattress weight has to be reduced in its accordance.

Aladino Hideaway Bed Single Vertical Manual Version



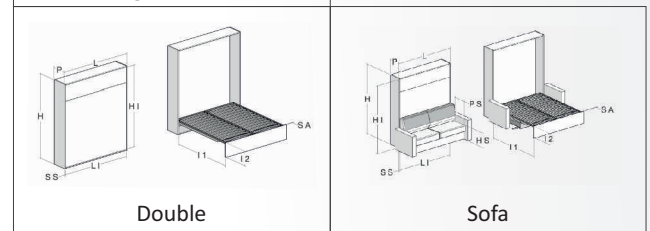
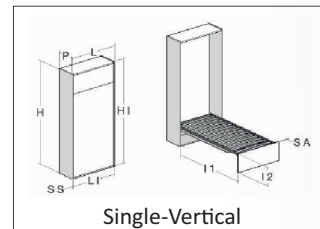
Aladino is a functional and comfortable hide-away bed with a smooth balanced manual opening. Developed for a daily use, its strength is given by the use of important tube profiles, which prevent the doors from bending, granting a long lifetime over the years, For cabinets with inside closing front.

Available in sizes:

- Single (Vertical) Bed size 870mm x 2000mm

MANUAL VERSION: TECHNICAL DETAILS

Mattress size	870 x 2000mm
Bedspring weight	18.1Kgs
Mattress average weight	14.5Kgs
Footboard panel weight	4.2Kgs
Front panel weight	20Kgs
Internal cabinet size	2175 x 955 x 400mm



NOTE: Please ensure the weight balance (Front panel + Footboard panel) does not exceed 24.2kgs, If the weight exceeds the mattress weight has to be reduced in its accordance.

Aladino Hideaway Double Bed Motorized Version



Aladino is a functional and comfortable hide-away bed with a smooth balanced manual opening. Developed for a daily use, its strength is given by the use of important tube profiles, which prevent the doors from bending, granting a long lifetime over the years, for cabinets with inside closing front.

Available in size:

- Double (Vertical) size 1620mm x 2000mm

Motorized Mechanism

The **Motorized Hideaway Bed's** movement happens by means of two engine put on the sides of the structure, and recline the bedspring and by other two gas springs which recline the upper panel, that becomes the bed's footboard.



TECHNICAL DETAILS

Bedspring	1620mm
Mattress size	1600 x 2000mm
Bedspring weight	32Kgs
Mattress average weight	28Kgs
Footboard panel weight	9.5Kgs
Front panel weight	38Kgs
Internal cabinet size	2175 x 1705 x 360mm

NOTE: Please ensure the weight balance (Front panel + Footboard panel) does not exceed 47.5kgs, If the weight exceeds the mattress weight has to be reduced in its accordance.

Aladino Hideaway Sofa Cum Bed Motorized Version



Aladino is a functional and comfortable hide-away bed with a smooth balanced manual opening. Developed for a daily use, its strength is given by the use of important tube profiles, which prevent the doors from bending, granting a long lifetime over the years, For cabinets with inside closing front. It can be completed by a collapsible sofa set.

Available in size:

- Double (Vertical) size 1620mm x 2000mm

Motorized Mechanism

The **Motorized Hideaway Bed's** movement happens by means of two engine put on the sides of the structure, and recline the bedspring and by other two gas springs which recline the upper panel, that becomes the bed's footboard.



TECHNICAL DETAILS

Bedspring	1620mm
Mattress size	1600 x 2000mm
Bedspring weight	32Kgs
Mattress average weight	28Kgs
Footboard panel weight	9.5Kgs
Front panel weight	38Kgs
Internal cabinet size	2175 x 1705 x 360mm



NOTE: Please ensure the weight balance (Front panel + Footboard panel) does not exceed 47.5kgs, If the weight exceeds the mattress weight has to be reduced in its accordance.

Pratik Storage Bed Fitting



Horizontal elevation functions permits free movement which makes the task of bed making comparatively easier. Stabilizing bar provides optimal stability. Comfortable opening enables free handling of things in the storage space. It is available in three different sizes.

Frame size: 1530mm x 1905mm

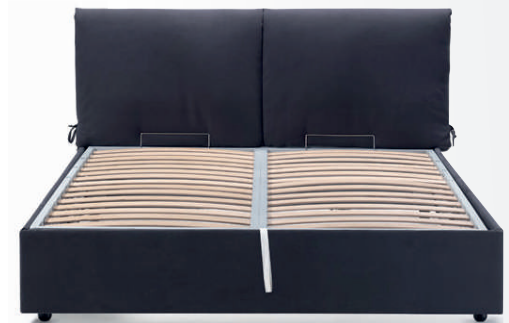
Cabinet size	1560 x 1950mm
Cabinet height	Min. 280mm
Weight of mattress	32 - 35Kg

Frame size: 1680mm x 1980mm

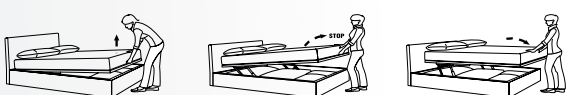
Cabinet size	1710 x 2025mm
Cabinet height	Min. 280mm
Weight of mattress	32 - 35Kg

Frame size: 1830mm x 1980mm

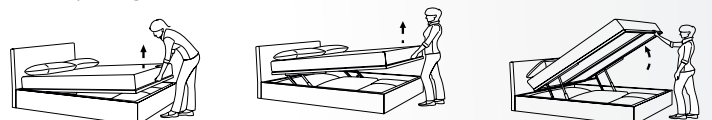
Cabinet size	1860 x 2025mm
Cabinet height	Min. 280mm
Weight of mattress	32 - 35Kg



Horizontal elevation



Total opening



Giove Storage Bed Fitting

Create an extra storage area Easy to install and access. Simple to open and close It is available in three different sizes.



Frame size: 1530mm x 1905mm

Cabinet size	1560 x 1935mm
Cabinet height	Min. 280mm
Weight of mattress	35 - 40Kg

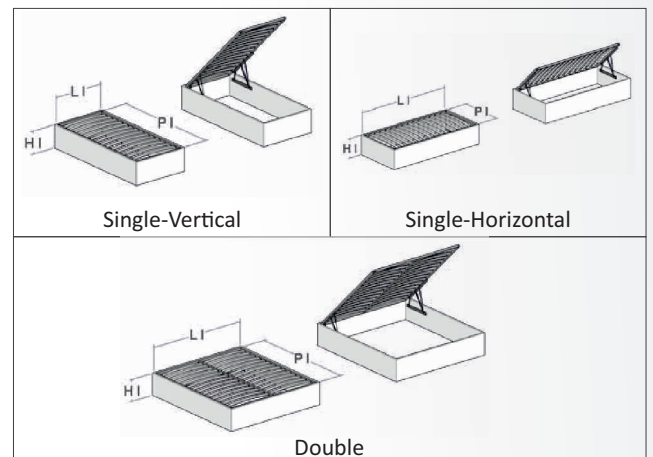
Frame size: 1680mm x 1980mm

Cabinet size	1710 x 2010mm
Cabinet height	Min. 280mm
Weight of mattress	35 - 40Kg

Frame size: 1830mm x 1980mm

Cabinet size	1860 x 2010mm
Cabinet height	Min. 280mm
Weight of mattress	35 - 40Kg

Giove



Alby Bed Fitting

Alby - M

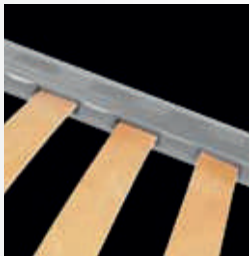
Automatic pull-out bed with head pull and headboard single models. Front panel floor-covering wheels Bed with slats.

Reduced high: Open 35cm
Closed 12cm



Unit size: 800mm x 1900mm

Bedspring height	320 - 350mm
Cabinet size	900 x 1950mm
Weight of mattress	15Kg



Top with slats



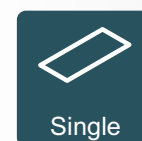
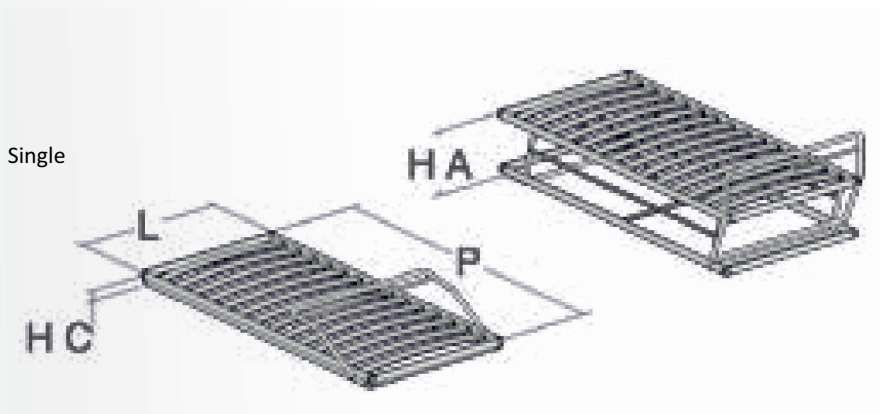
Curved metal profile



Brackets for front panel fastening



No-trace wheels



75x185 cm
80x185 cm
80x190 cm



Profile

Alby Bed Fitting

Alby - L

Automatic pull-out bed with side pull and headboard single models. Front panel floor-covering wheels Bed with slats.

Reduced high: Open 35cm
Closed 9.5cm

Unit size: 800mm x 1900mm

Bedspring height	320 - 350mm
Cabinet size	900 x 1950mm
Weight of mattress	15Kg



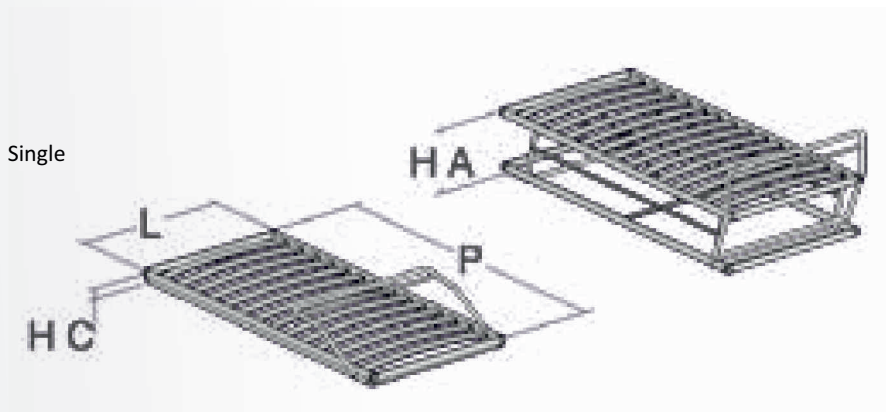
Top with slats



Curved metal profile



No-trace wheels



Single



Single - V

75x185 cm
80x185 cm
80x190 cm



30x33

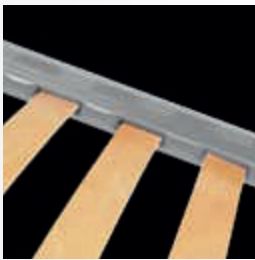
Profile

Hotel Bed Fitting

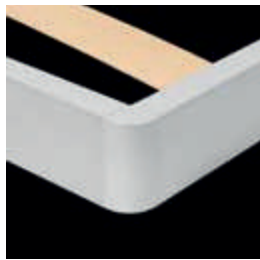
Finished structures and self-supporting frames. Easy to install and access.

Unit size: 1830mm x 1980mm

Legs height	300mm
Weight of mattress	35Kg

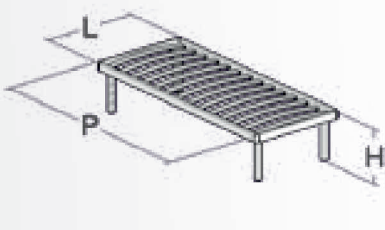


Top with slats

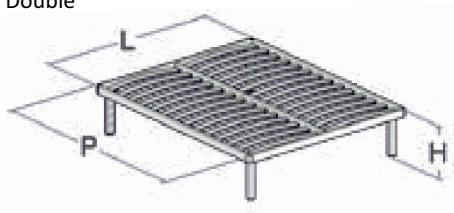


Extruded aluminium corners

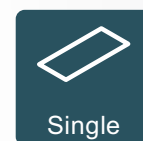
Single



Double



Profile



80x190 cm
90x200 cm



160x190 cm
160x200 cm

VARUN IMPEX

Address:

Gala No.1 & 4, Plot No.21, Papdy
Industrial Estate, Umela Phata,
Vasai Road (West), Palghar - 401207.
Mob.: +91 9167883194
Email: varunimpexkba@gmail.com
Website: www.varunimpex.in