

VARUN IMPEX

Solutions for Furniture Industry

ACCESSORIES FOR WALL CLADDING SYSTEM

ASSEMBLY INSTRUCTIONS



TECHNICAL NOTES

Pullout loads and max weight

Pullout load and max weight will vary depending on the clip type and are specified on each product sheet. The shock load is less. The weight will never be loaded uniformly on all clips, for this reason, the max weight of the panel should not be calculated by multiplying the single max load by the number of clips.

Panels need to be supported evenly around the perimeter. The max clip spacing is specified on each product sheet. Panels and clips could be subjected to shock loads. Please follow our guidelines. If you need more technical info send an email to varunimpexkba@gmail.com

Mounting with different materials

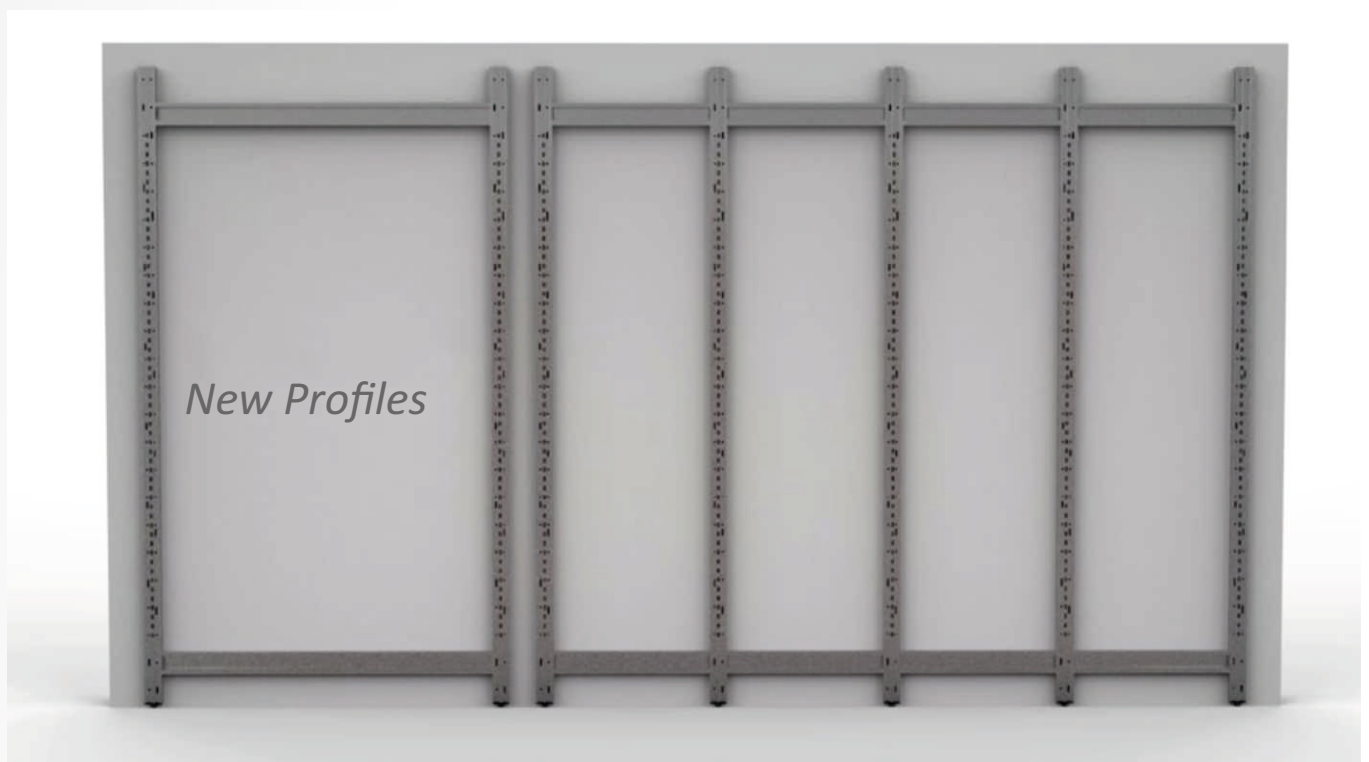
You can mount accessories with most panel materials such as plywood, MDF, plastic, berglass, HPL, sandwich panels and composite panels etc... It is not recommended to use materials such as granite and heavy cement board.



Fast Coupling System for Cladding Panels



Example of Frames



New Accessories Assembly



Bracket



Frontal Clip



Bayonet

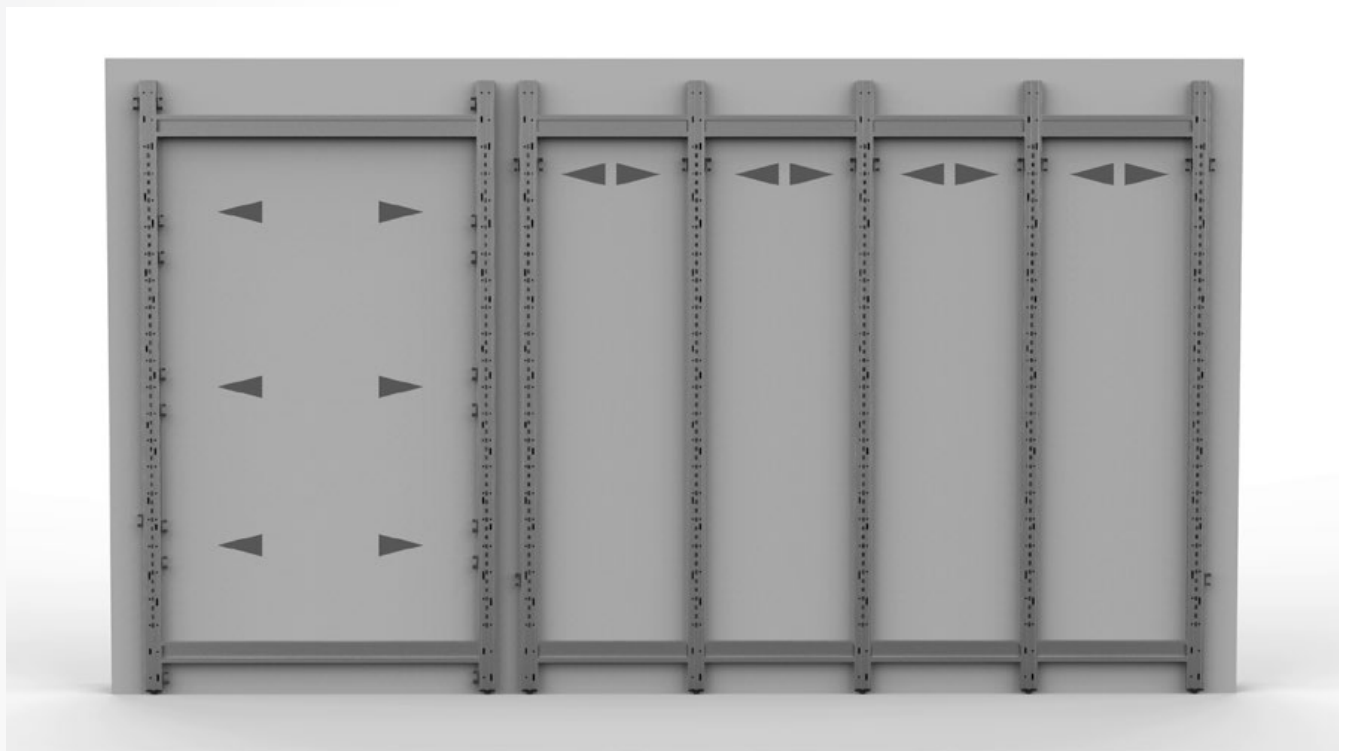


Mounting of the brackets

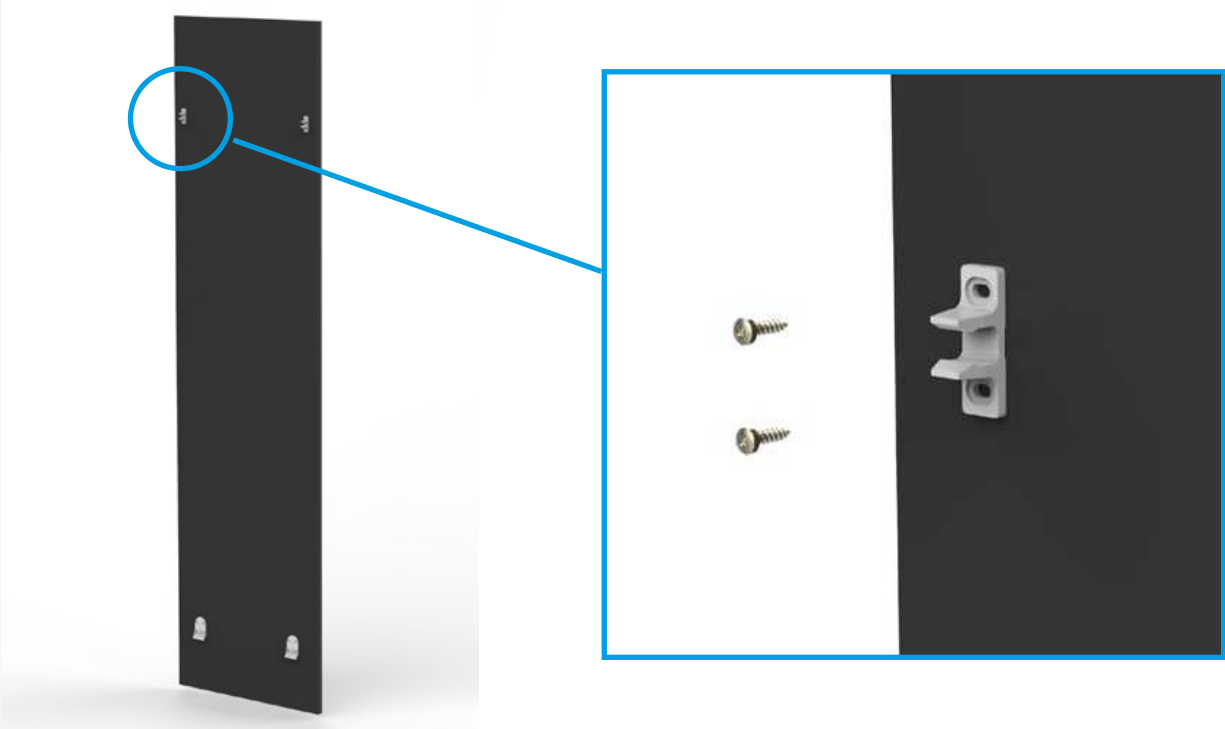
Fix the Bracket in Position



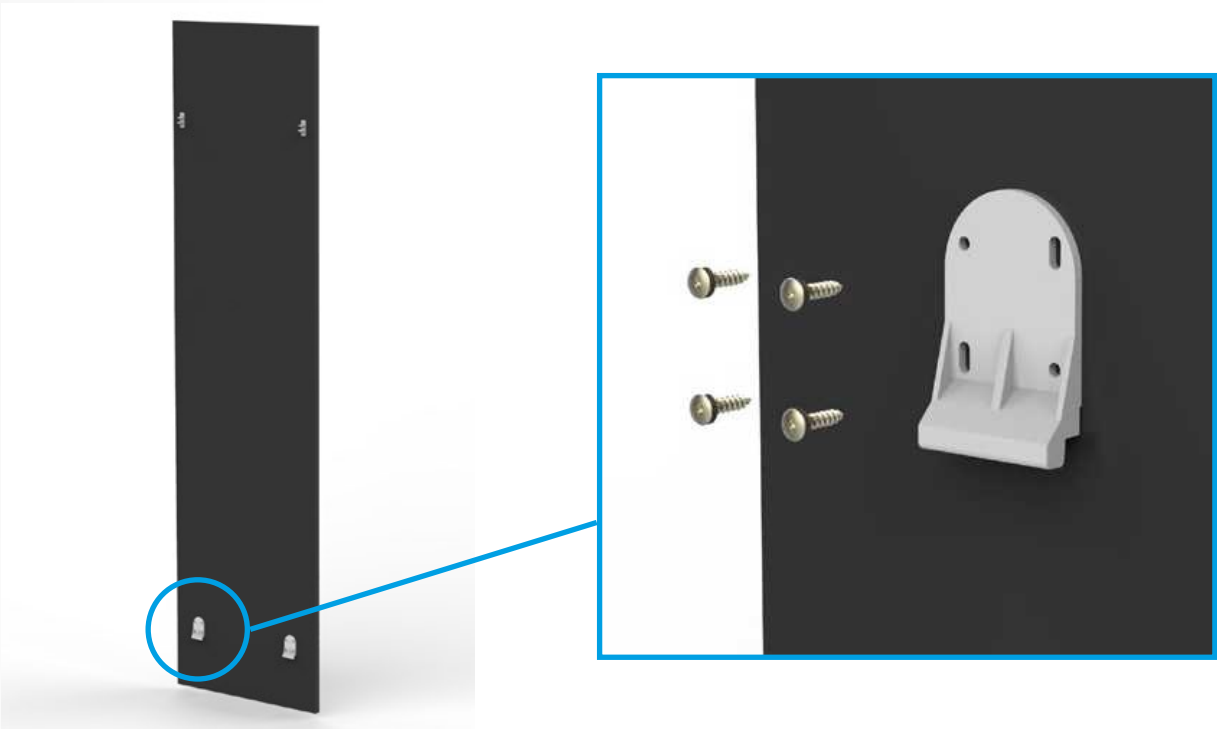
Fasten the Other Brackets



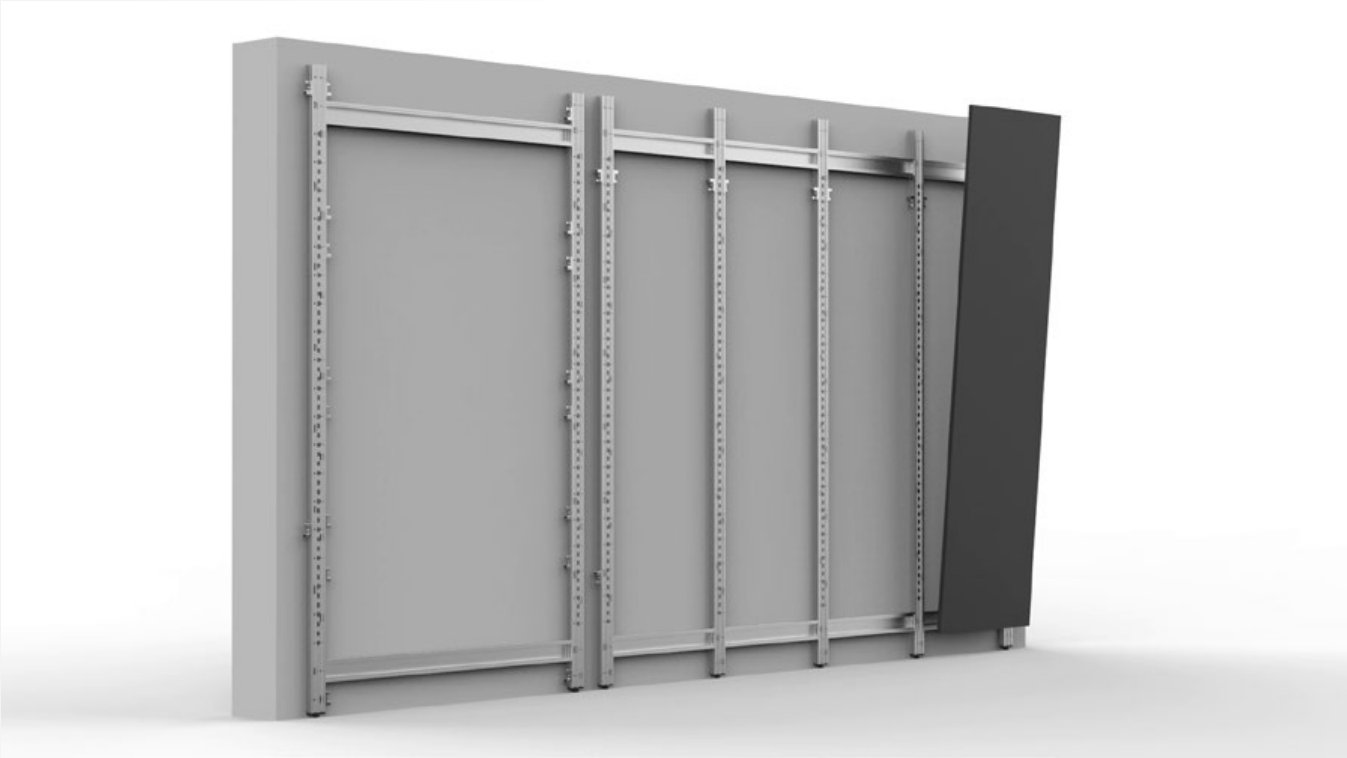
Fasten the Frontal Clip by Screws



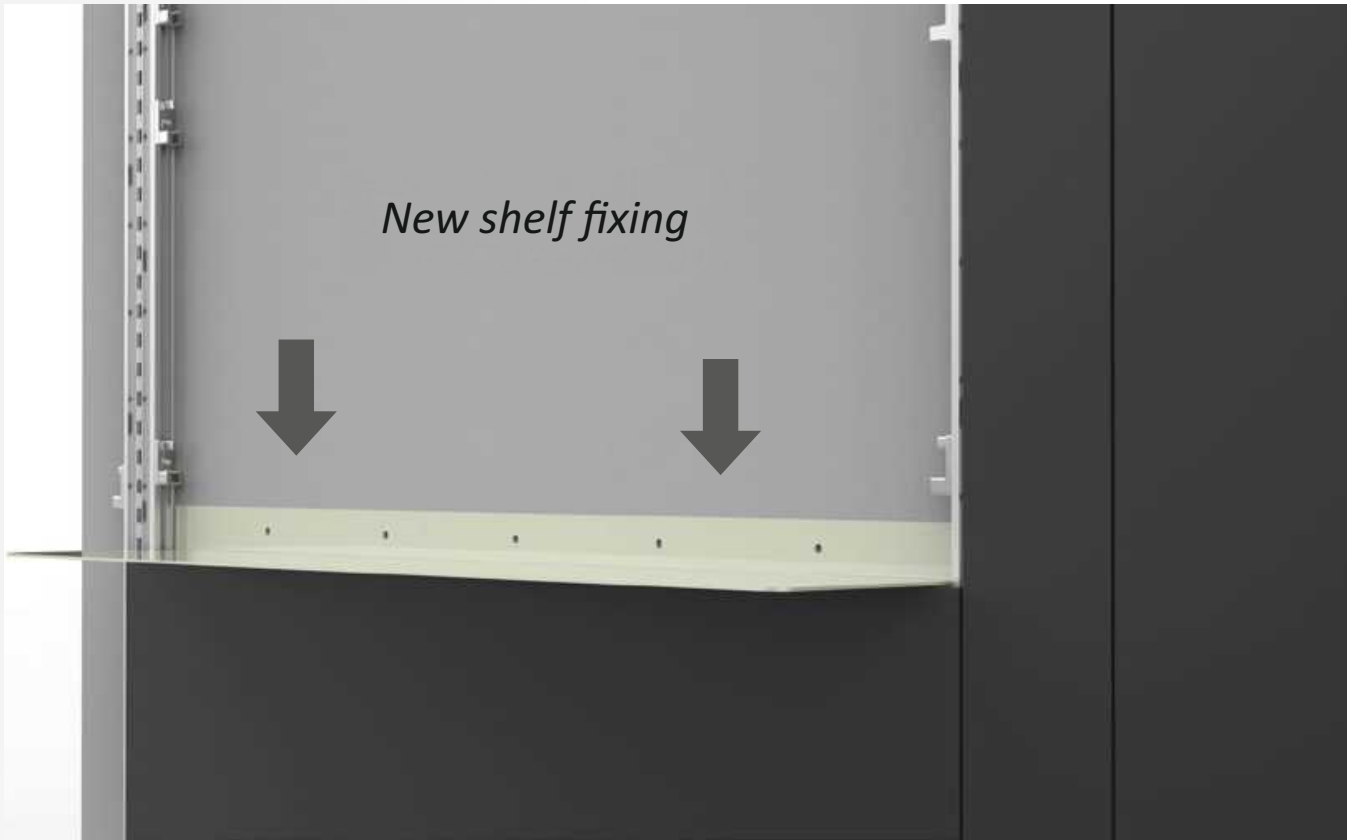
Fasten the Bayonet by Screws



ACCESSORIES FOR WALL CLADDING SYSTEM



Place the shelf on the Lower Panel



Fasten the Shelf to the Wall by Screws





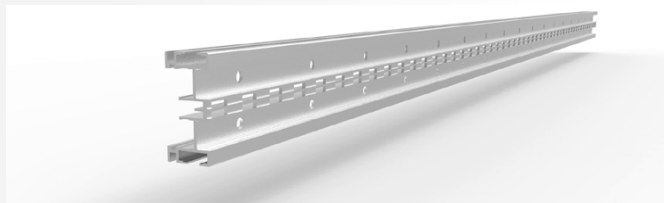
Insert the brackets to the profile



Technical Data Sheet

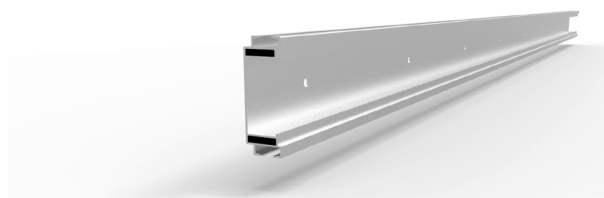
Code: 011118.001.00.51

Vertical Profile 3 metres length pre drilled
Nat. Anodized



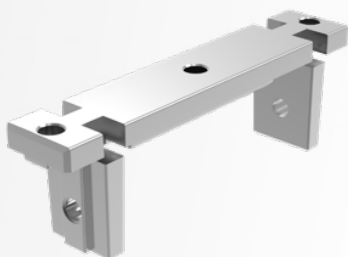
Code: 011117.L300.00

Horizontal profile 3 metres length raw finishes

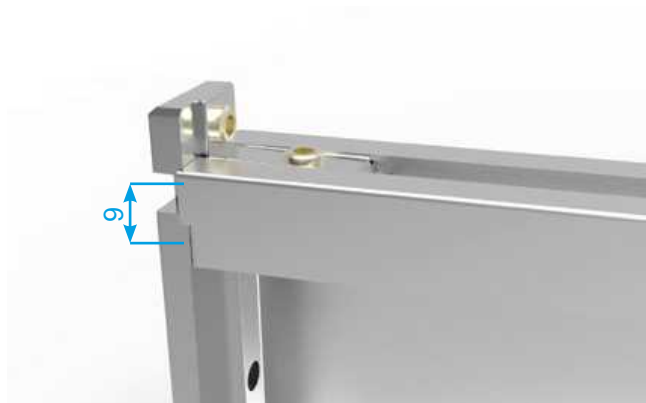


Code: 01CH252----3P

Corner joint for profile



Mounting



Code: 01CT330----0F

Plug with threaded hole for adjuster



Code: 000V463

Adjustable feet

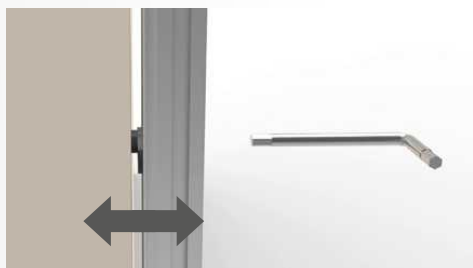
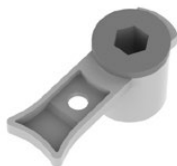
Max stroke 20 mm



Code: 000V464

Wall Distance Adjuster

Max stroke 10 mm

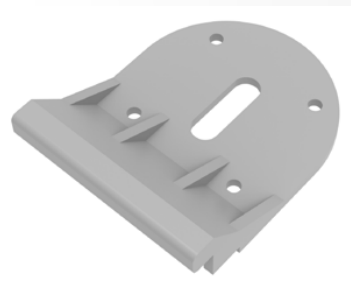


Code: 000H253

Bayonet for direct fixing to horizontal profile

Max weight 40 Kg cad

Max Spacing 900 mm



Code: 000H245

Fitlock Female for central fixing

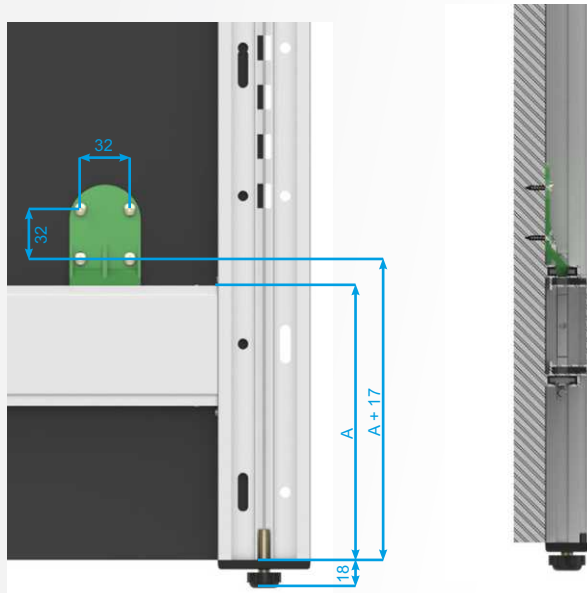


Code: 000H243-S

Fitlock clip Soft



Drilling pattern



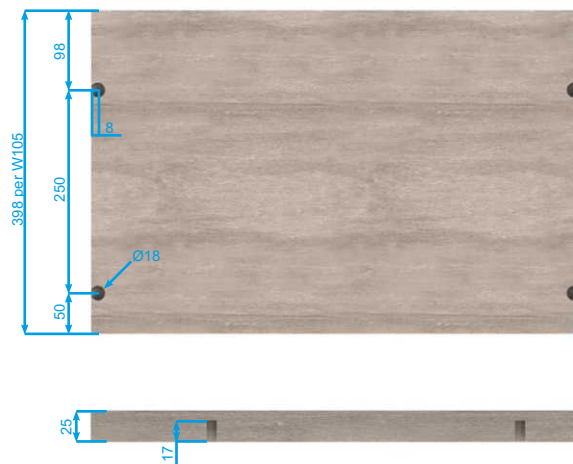
Code: 000W105- 07

Pair of brackets with shelf supports
(Lateral Side Support), painted



Pair max weight: **L=450mm 50 Kg**
L=600mm 50 Kg

Max Spacing 900 mm for shelves wider than
700mm, check the deformation of the panel.



Code: 000W105-1 -07

Central bracket w/shelf supports,
painted



ACCESSORIES FOR WALL CLADDING SYSTEM



VARUN IMPEX

Address:

Gala No.1 & 4, Plot No.21, Papdy
Industrial Estate, Umela Phata,
Vasai Road (West), Palghar - 401207.
Mob.: +91 9167883194
Email: varunimpexkba@gmail.com
Website: www.varunimpex.in